

The Print Shop 23.1 Installation Guide

Table of Contents

| | |
|---|-----------|
| Disclaimer..... | 2 |
| The Print Shop 23.1 Installation Guide | 3 |
| Start Installation:..... | 3 |
| Serial Key:..... | 3 |
| <i>Fig 1: Activation Key.....</i> | <i>3</i> |
| User Credentials:..... | 4 |
| <i>Fig 1.1: User Credentials</i> | <i>4</i> |
| PDFill Set-up Wizard: | 5 |
| <i>Fig 2: PDFill Set-up Wizard</i> | <i>5</i> |
| Default Settings:..... | 5 |
| <i>Fig 2.1: Default Settings</i> | <i>6</i> |
| <i>Fig 2.2: Default Settings</i> | <i>6</i> |
| Prerequisite-Installation Requirements..... | 7 |
| <i>Fig 3: Pre-Installation Requirements.....</i> | <i>7</i> |
| The Print Shop Installation..... | 8 |
| <i>Fig 4: The Print Shop Installation</i> | <i>8</i> |
| License Agreement..... | 9 |
| <i>Fig 4.1: License Agreement</i> | <i>9</i> |
| Set-up Type | 10 |
| <i>Fig 5: Set-up Type</i> | <i>10</i> |
| Compatibility Settings | 11 |
| <i>Fig 6: Compatibility Settings</i> | <i>11</i> |
| Installation Complete..... | 11 |
| Installation From ISO..... | 12 |
| <i>Fig 7: Installation from ISO.....</i> | <i>12</i> |

Disclaimer

Before installing this product, please be sure that you (or the person you are buying the product for) are eligible to use the Print Shop 23.1 software. Please make sure you are aware of the requirements necessary to install and use this product as well as a few changes to this new version of The Print Shop 23.1.

To Note:

- This version does not include an address book and mail merge capabilities.
- Users have to purchase the premium clip art disc separately to use the offline clip art and projects.

The Print Shop 23.1 Installation Guide

Welcome to **The Print Shop 23.1** installation guide! This document will help you to install **The Print Shop 23.1** on your computer, guiding you at every step. Depending on your hardware configuration, the installation process can take as little as 10- 15 minutes.

Start Installation:

Double click the file to start the installation.

Serial Key:

To enable the register button, make sure you have a Serial Key, which you have received in the purchase email. Keep it with you while you install The Print Shop 23.1. Fig 1

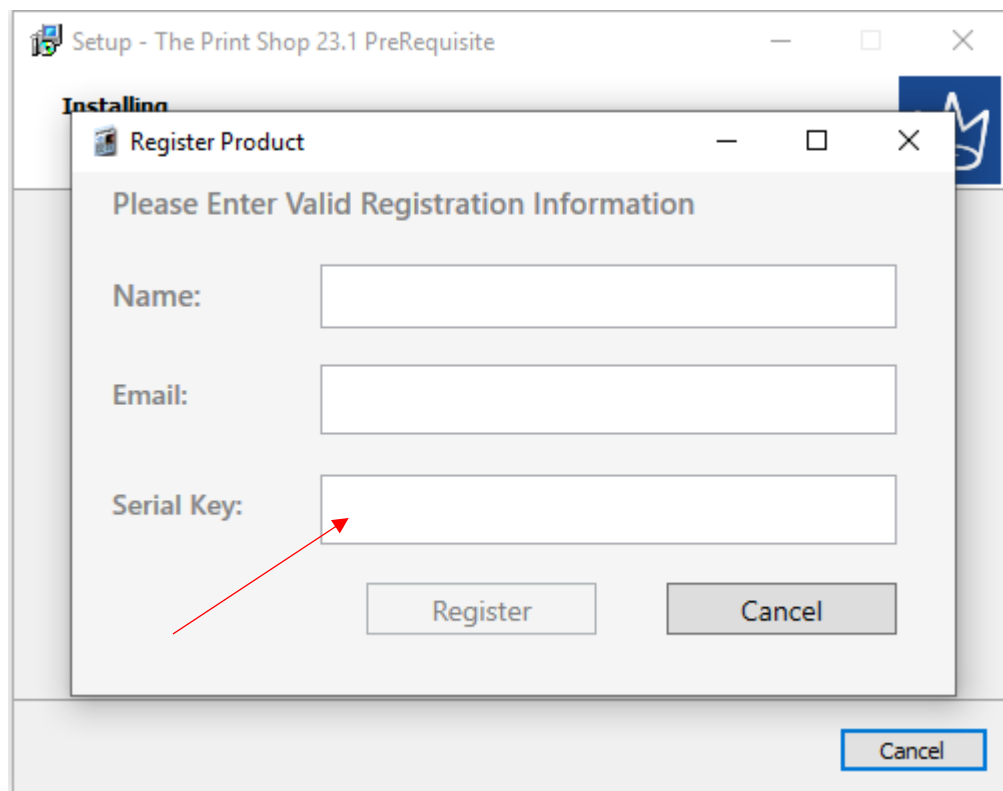


Fig 1: Activation Key

User Credentials:

You will need to provide all the required information (Fig. 1) i.e. Full name and Email address along with the serial key (that can be found in the purchase email) to proceed further with the installation. Fig 1.1:

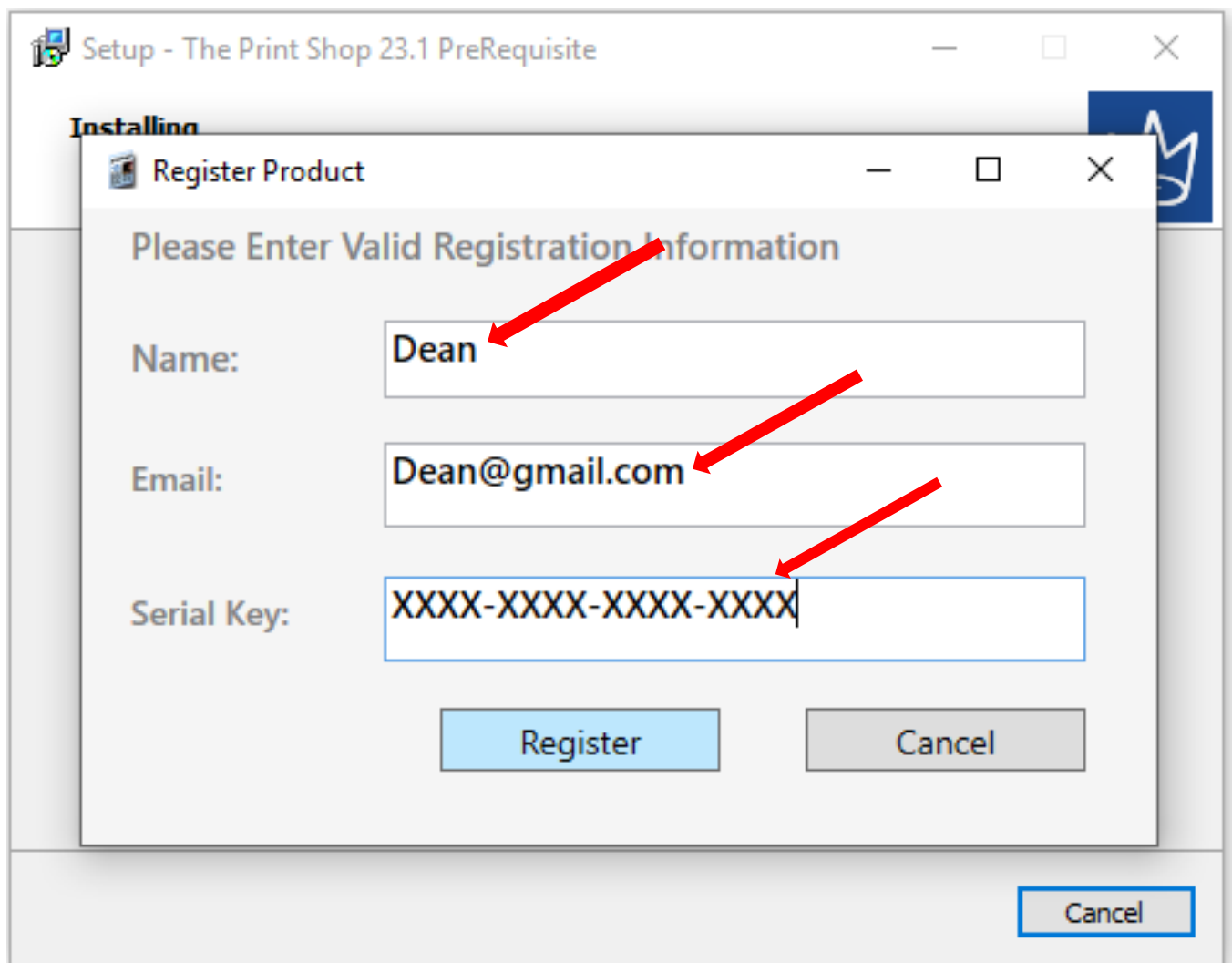


Fig 1.1: User Credentials

PDFill Set-up Wizard:

It is a free solution to use save as PDF functionality, so, it is mandatory to install this set-up going further with software.Fig.2

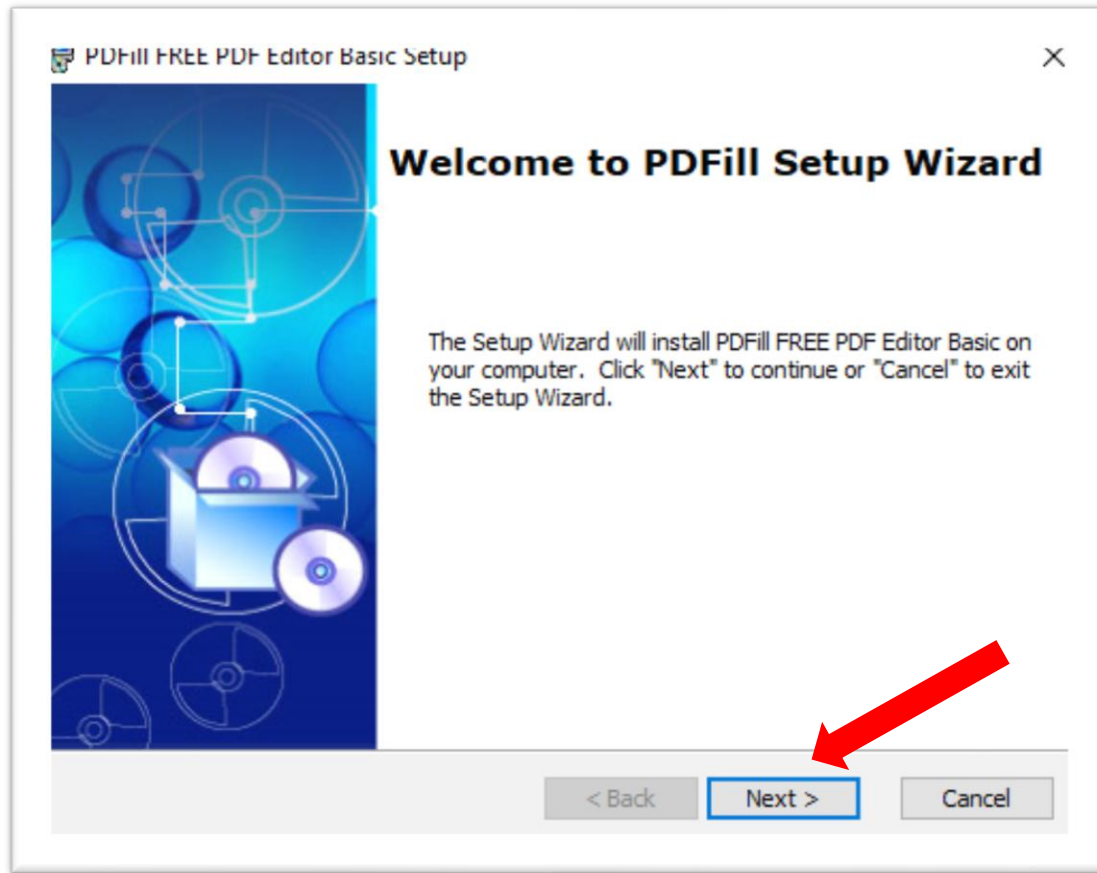


Fig 2: PDFill Set-up Wizard

Default Settings:

The following are the default settings for PDFill: Fig 2.1 and 2.2:

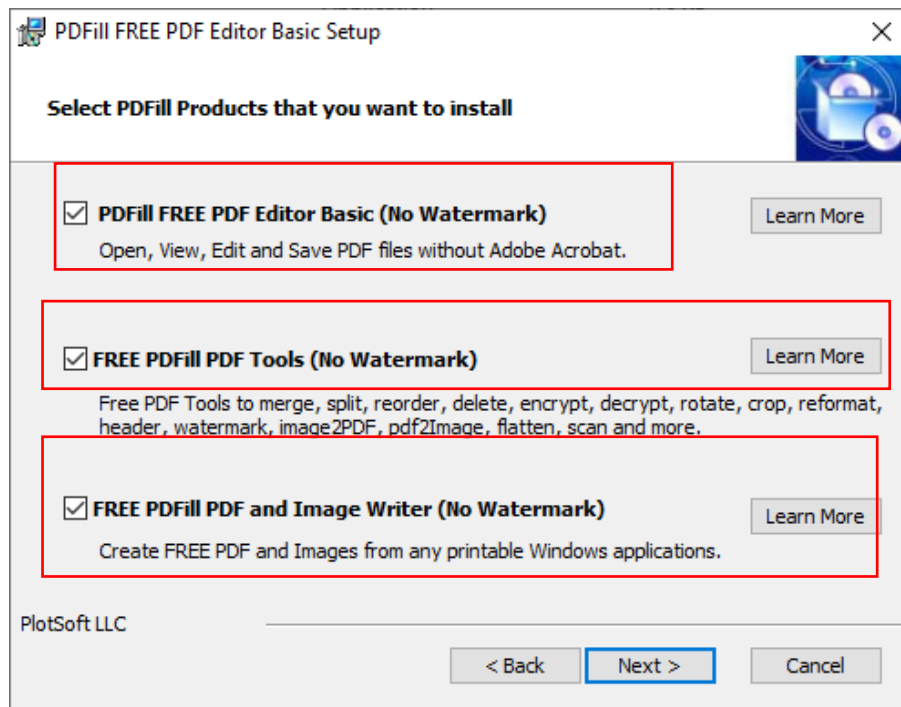


Fig 2.1: Default Settings

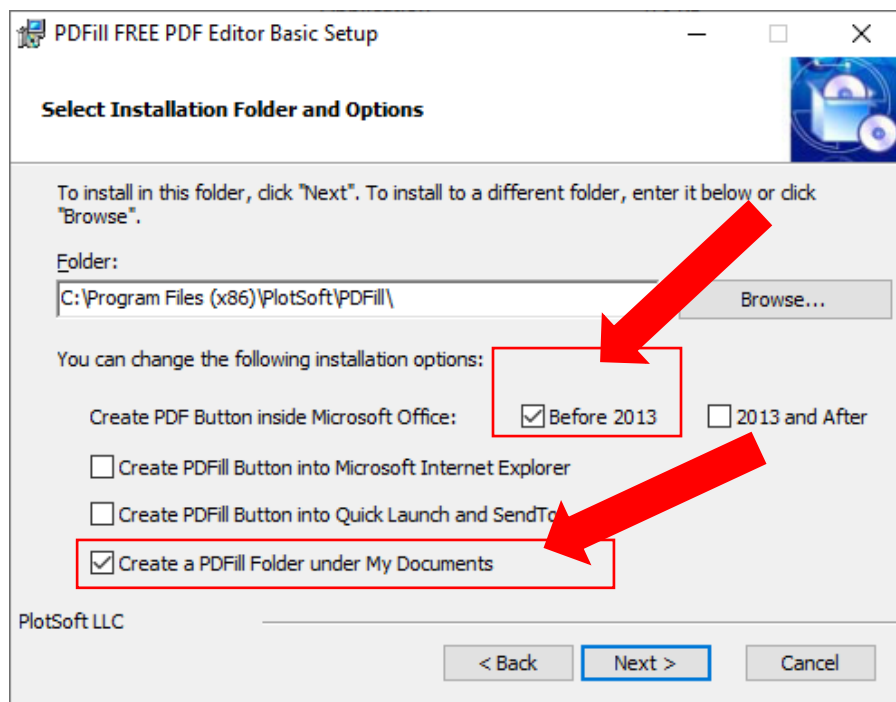


Fig 2.2: Default Settings

Prerequisite-Installation Requirements

The following prerequisites and requirements must be satisfied for a successful installation.

The installer program checks the software prerequisites, identifies if any items are missing, and will alert you if any additional items need to be installed. Fig.3:

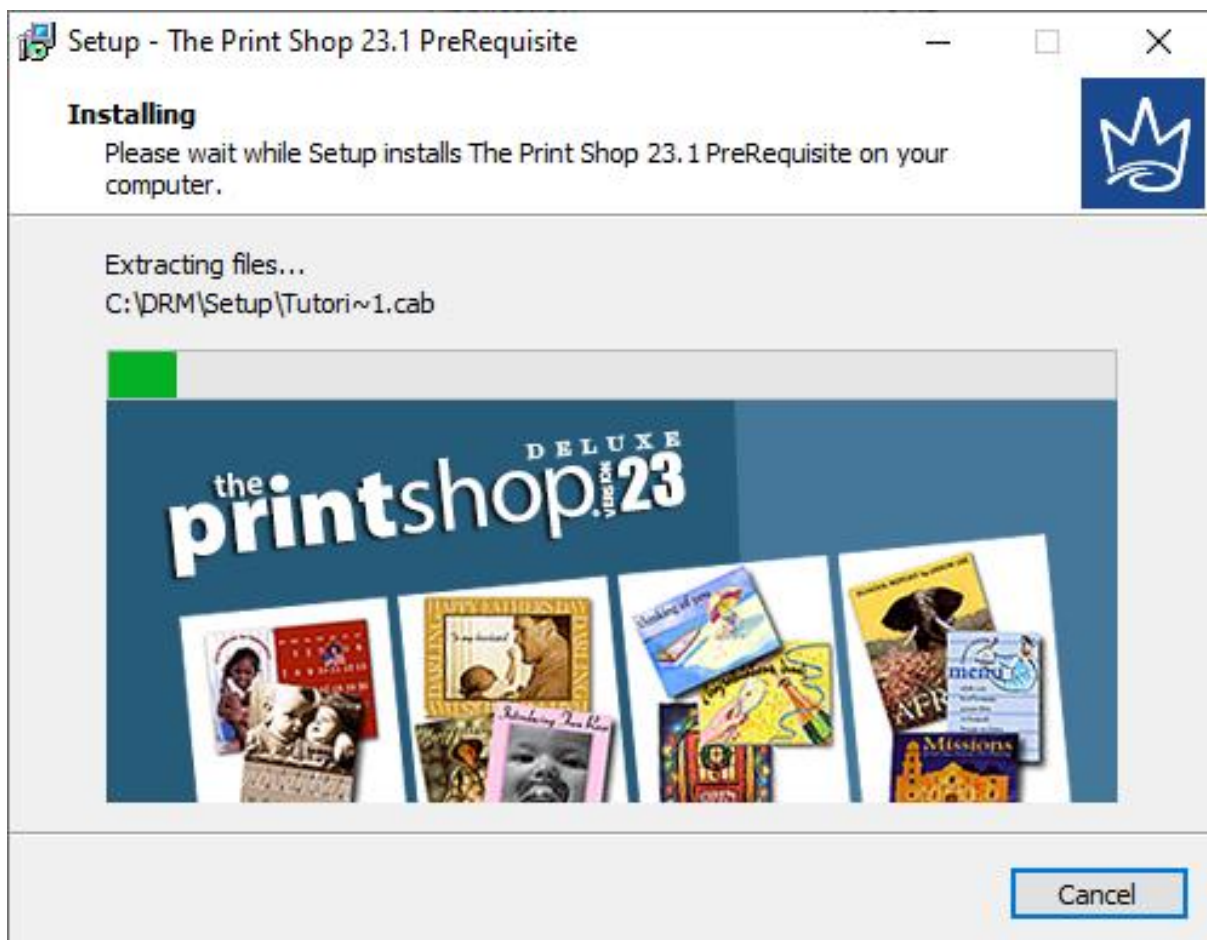


Fig 3: Pre-Installation Requirements

The Print Shop Installation

After the prerequisite installation is complete, the TPS 23.1 main installation will start. (Fig 4)

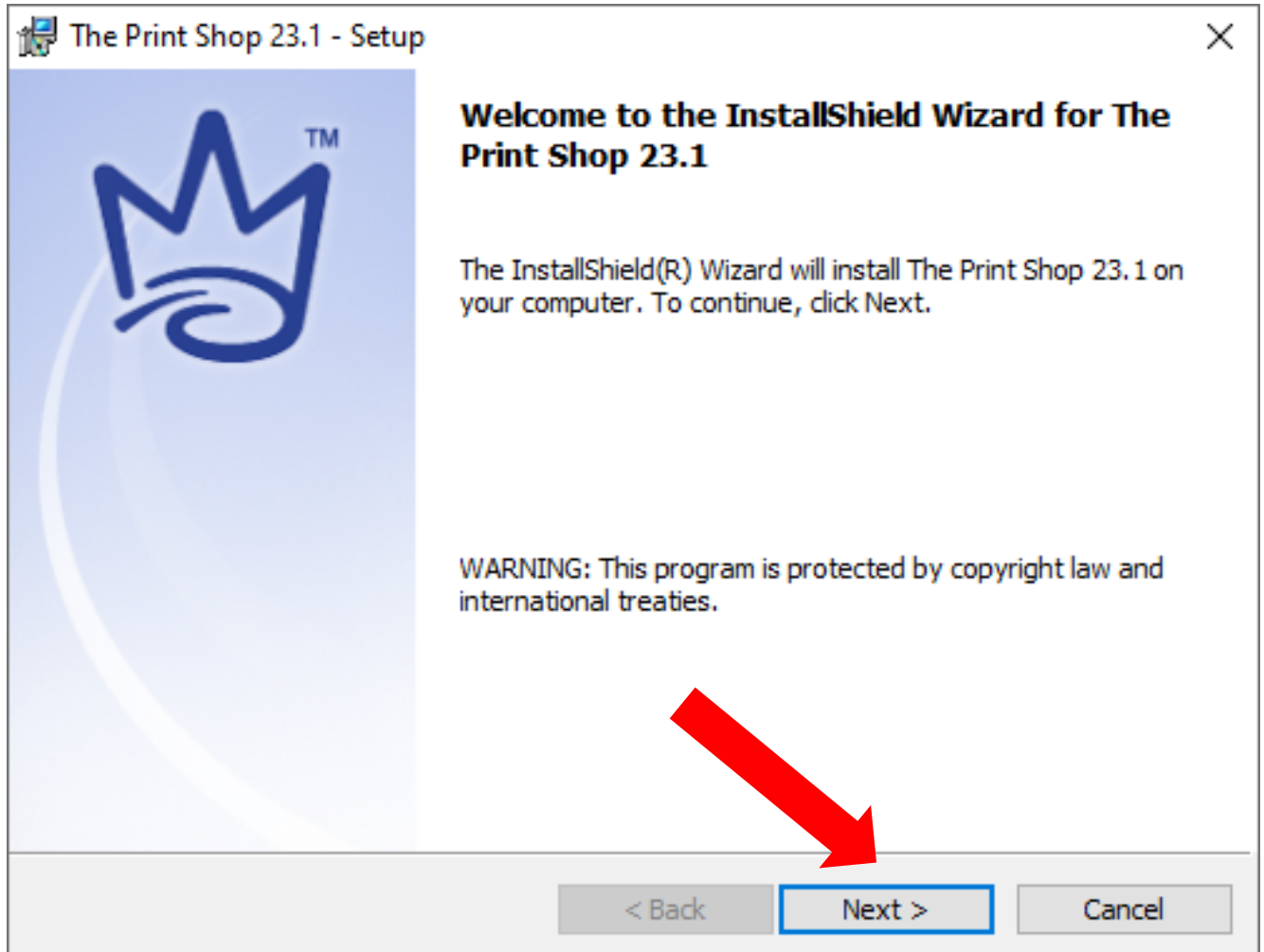


Fig 4: The Print Shop Installation

License Agreement

User will check a box next to “I accept the terms in the license agreement” and then click the “Next” button. Fig 4.1.

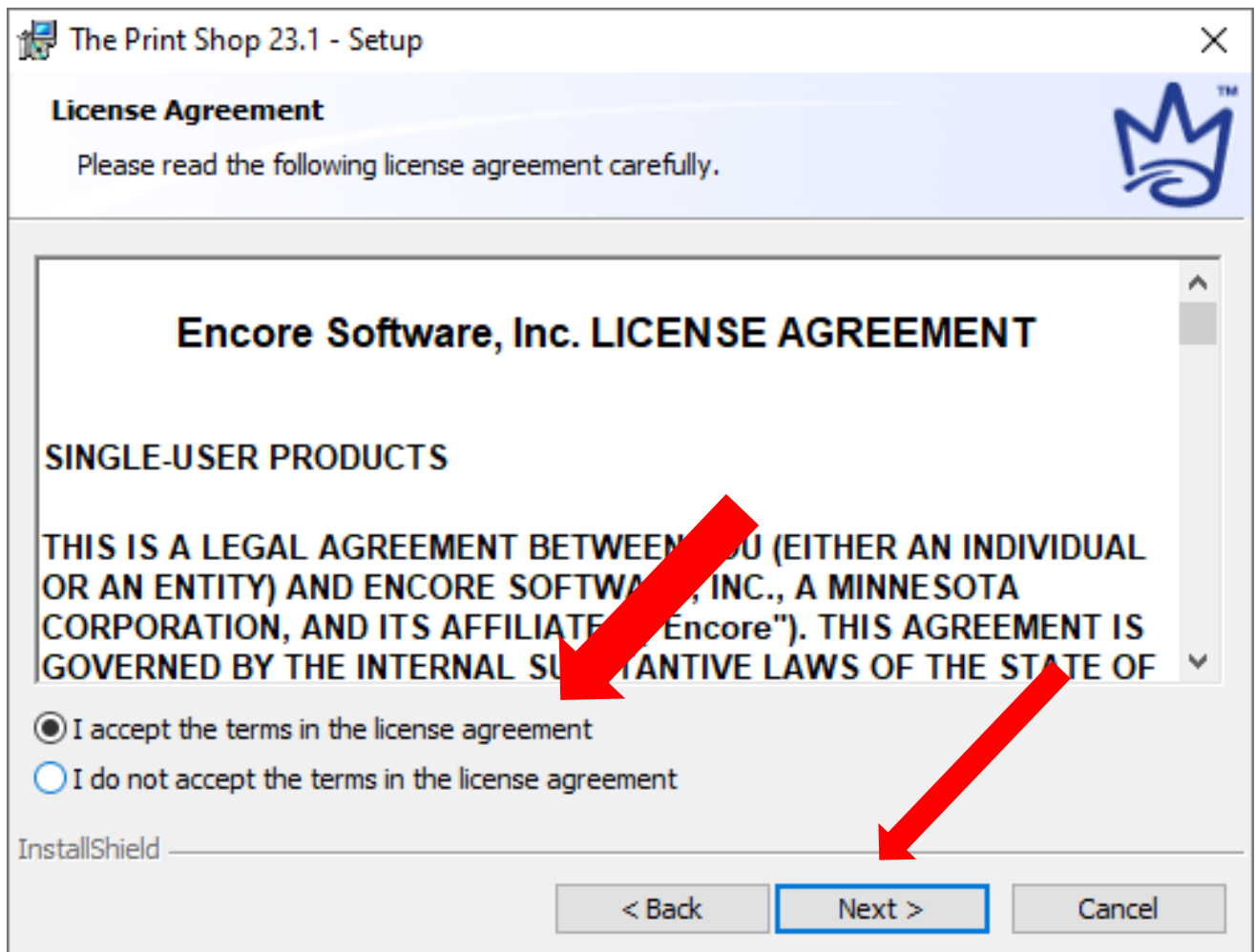


Fig 4.1: License Agreement

Set-up Type

To have a successful installation, the minimum option must be chosen.

If you want to enhance your Print Shop experience, you can purchase the additional images on at Broderbund.com or Encore.com. Fig 5:

Note: Users have to purchase premium clip art disc separately to use offline clip art and projects.

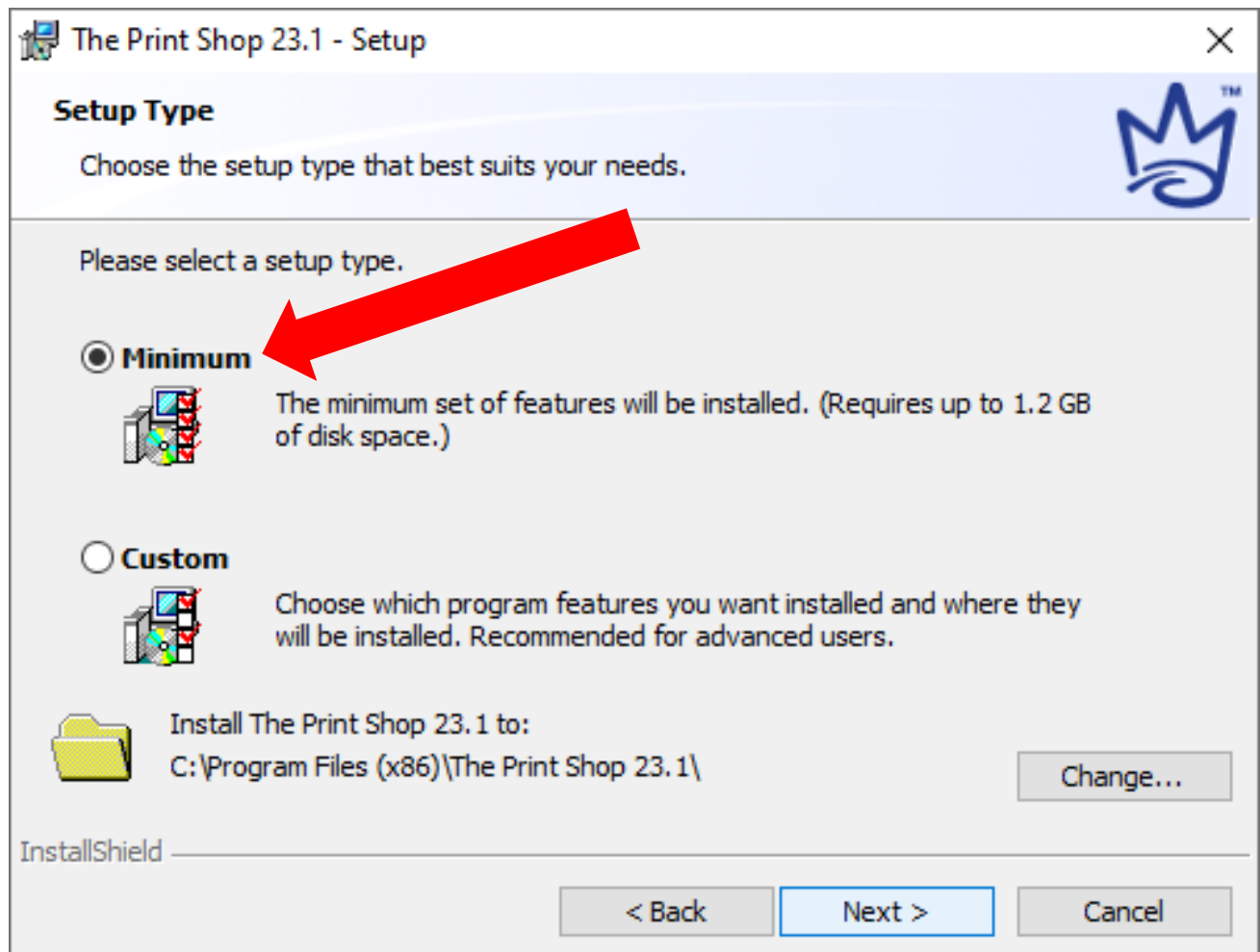


Fig 5: Set-up Type

Compatibility Settings

After the successful installation of TPS 23.1, you need to install the compatibility settings for your system. This box automatically appears after the successful installation of The Print Shop 23.1. Fig 6

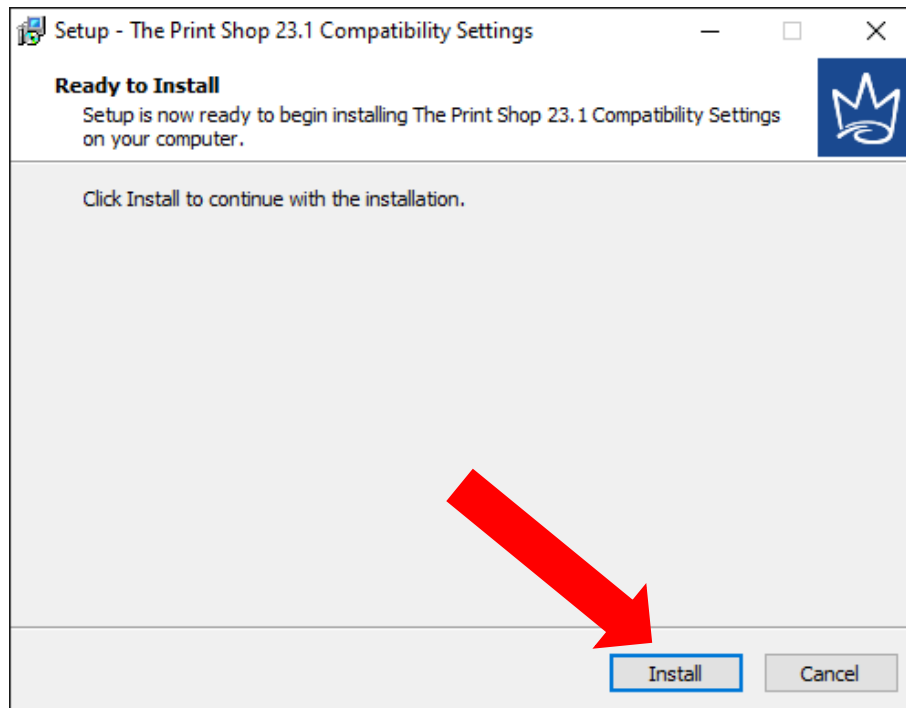


Fig 6: Compatibility Settings

Installation Complete

Once you are done with all the steps, click Finish to close the installation process. You are now ready to start using The Print Shop 23.1.

If you have any questions, please send an email to support@encore.com.

Installation From ISO

Instructions for installing TPS 23.1 from ISO:

1. Right-click on ISO and go-to options:

✓ Open with → window explorer (Fig7)

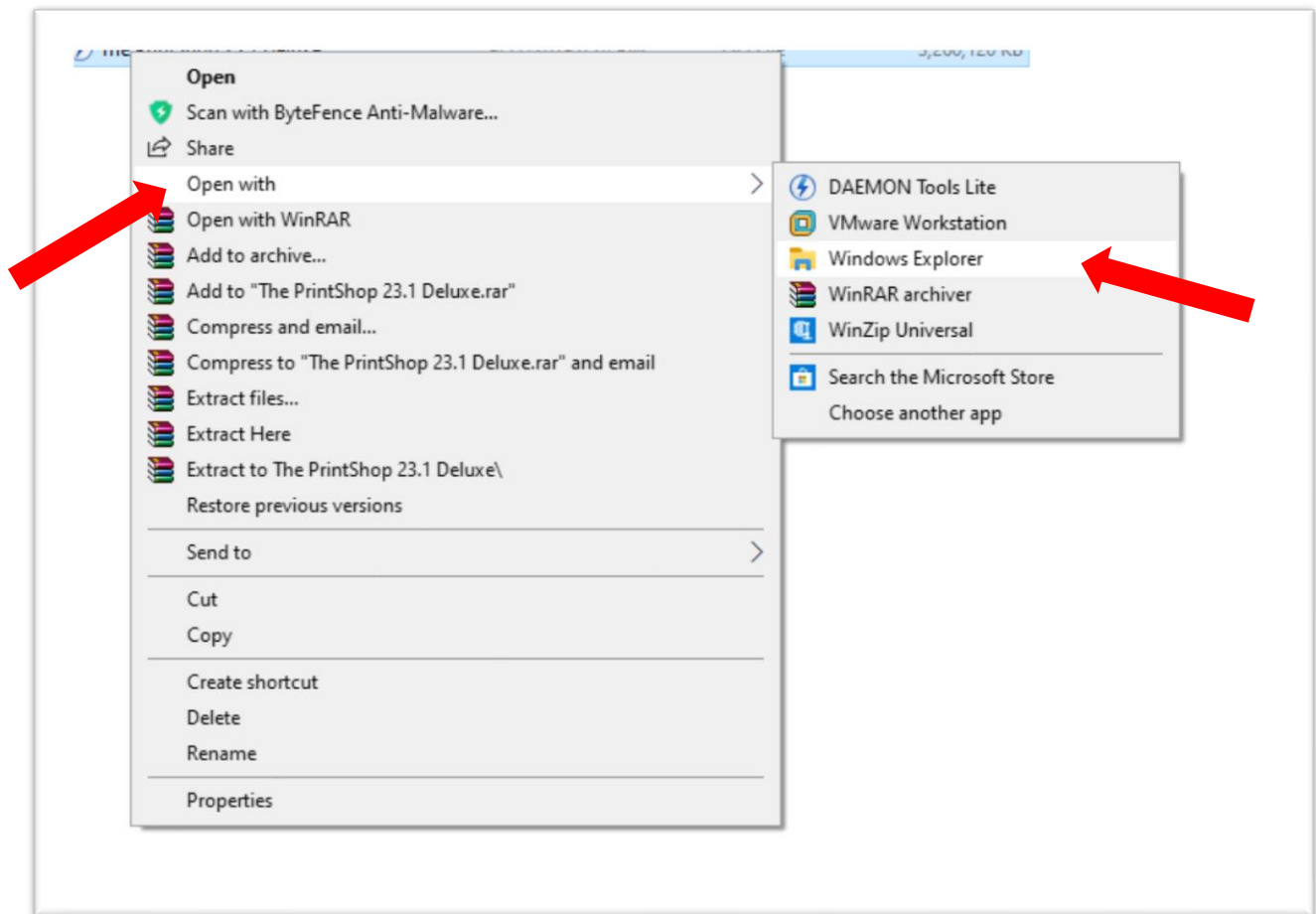


Fig 7: Installation from ISO

2. After completing the first step, you can see a partition in the drive area where an installer file (.exe) can be found.
3. Click Run on Installer file to proceed.